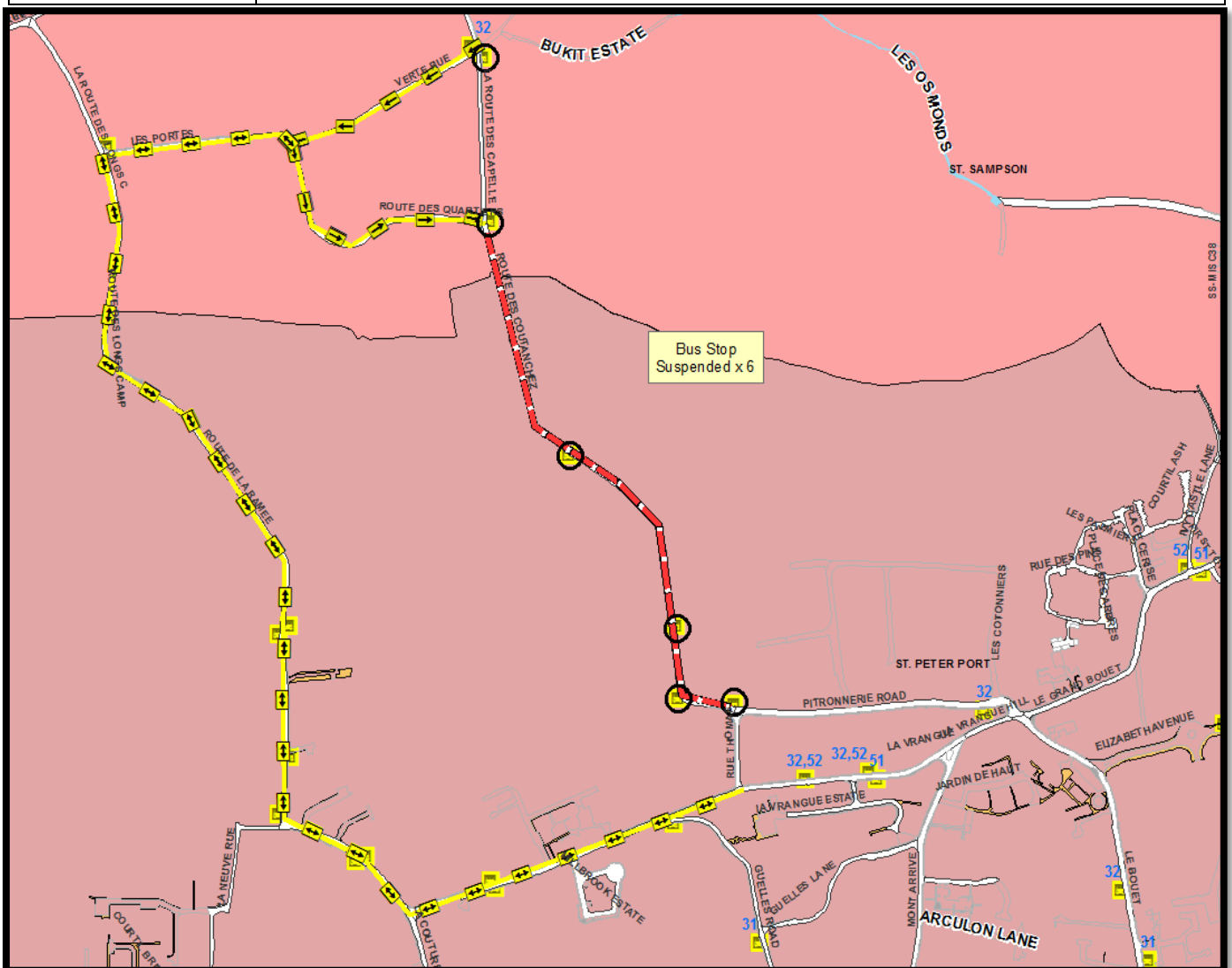




**SCHEDULED BUS DIVERSION INFORMATION**

Road affected: **Route des Coutanchez, St Peter Port**  
 Traffic Management: **Closure**  
 Reason for works: **Rebuilt Sub Station**  
 Dates: **18<sup>th</sup> – 20<sup>th</sup> February 2019**

Bus Routes affected:	<b>31, 32.</b>	
Diversion route:	<b>Outbound:</b>	<b>32: La Vrangue – Route de La Ramee – Les Portes – Route des Quartiers – Back on route.</b>
	<b>Inbound:</b>	<b>31: Verte Rue – Les Portes – Route de La Ramee – La Vrangue – Back on route.</b>
Notes:	None	



For further information on scheduled bus diversions affected by current and future road closures please call CT Plus on 700456 or consult [www.buses.gg](http://www.buses.gg).

Please note the vehicle diversions may differ to the above and can be viewed on [www.iris.gov.gg](http://www.iris.gov.gg)

Contractors providing school bus services that may be effected, are reminded to notify schools of any changes to routes, pick-up or drop-off points.